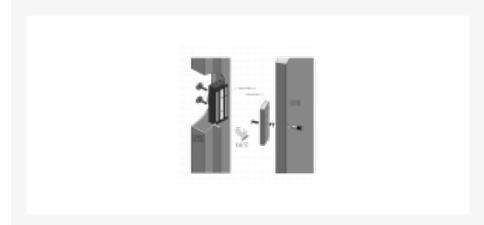




ASEC A10020M Standard Magnet Mortice Monitored To Suit AS12373 Transom Housing



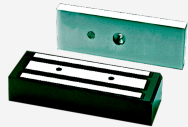
Description

This Asec standard mortice magnet is designed for flush mount applications access control, where an auxiliary locking mechanism without moving parts is required such as fire or life safety situations. It has a holding force of up to 1200 lbs, dual selectable voltage 12V or 24V and lock monitoring.

Features

- Designed for flush mount applications
- Suits AS12373 transom housing
- Fail safe
- Low energy consumption
- Dual voltage - 12V or 24V
- No moving parts to bind or wear out
- Lock status monitoring
- Up to 1200 lbs holding force

Product Table



AS12386

12/24V Selectable